

PRELIMINARY DATASHEET

Digi SMARC Adapter

SMARC® Adapter SOM and SBC reference designs provide maximum flexibility and scalability for Digi ConnectCore® SOMs

Digi SMARC Adapter reference designs showcase the latest capabilities in embedded technologies for the standardized Digi SMTplus® form factor. SMARC (Smart Mobility ARChitecture) is an industry standard for system-on-modules (SOMs) and single board computers (SBCs) used to develop portable devices where flexibility and scalability are relevant. The i.MX pin function available in the LGA pinout and a subset of functions available through the SMARC edge adapter enable developers to evaluate integration of a Digi ConnectCore module and Digi Embedded Yocto in products designed for SMARC modules.

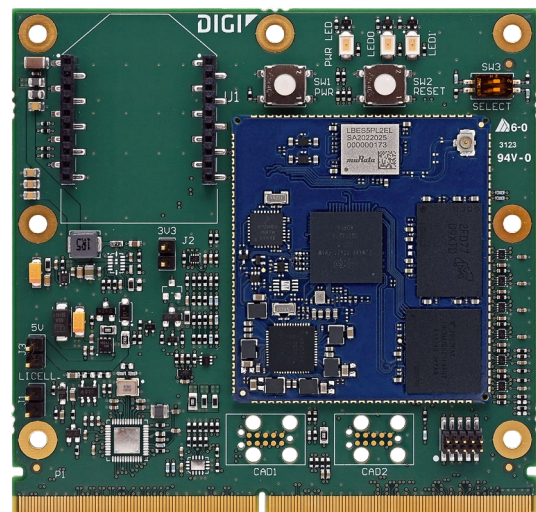
With support for dual monitors, MIPI, LVDS, HDMI, camera MIPI, PCI-e, dual Ethernet, dual USB and dual CAN, Digi SMARC Adapter reference designs simplify edge computing with reliable performance and proven support. The Digi SMARC Adapter provides an 82 x 80 mm form factor with the 314-pin edge connector on SOM and 0.5 mm RA on carrier. Digi SMARC Adapter provides high-power 5 V operation, with power and user LEDs.

Digi SMARC Adapter designs offer compatibility across the Digi product line and prototypes using Digi ConnectCore 8X, 93 and 8M Mini that help accelerate time-to-market.

Embedded device security is a critical design consideration for connected IoT applications. **Digi ConnectCore SOM solutions** provide built-in security with **Digi TrustFence®**, a fully integrated IoT security framework simplifying the process of securing connected devices. **Digi ConnectCore Cloud Services**, **Digi ConnectCore Security Services** and **Expert Support** provide additional capabilities for development, deployment and maintenance throughout the entire product lifecycle.

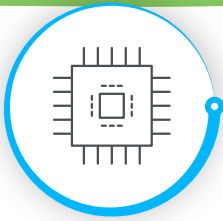
Our decades of embedded experience and millions of deployed devices tell our story; Digi is a trusted solutions provider dedicated to simplifying the way OEMs design, build, deploy and maintain secure connected products.

Digi Wireless Design Services (WDS) is an engineering team that provides additional cellular integration support, certification assistance, and custom design and build services to get your products to market smarter and faster.

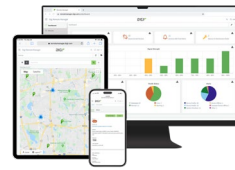


Key features, benefits and applications

- Industrial-grade, scalable, embedded SOM and SBC platform
- Supports dual four-lane MIPI display (Digi ConnectCore 8X), MIPI CSI two-lane, wired RGMII Ethernet, dual USB (ConnectCore 8X, 8M mini and 93), dual CAN (ConnectCore 8X and 93), three UARTs (console included), five GPIOs, one power and two user LEDs
- 40 x 45 mm SOMs mapped on the 82 x 80 mm Digi SMTplus form factor for ultimate reliability
- Power management with hardware and software support
- Seamless cellular modem and **Digi XBee®** integration
- **Digi ConnectCore Cloud Services** for remote monitoring, device management and IoT application enablement
- **Digi Embedded Yocto** Linux support
- Turnkey development services available from **Digi WDS**



DIGI SMARC ADAPTER SOM Integration



Connect this device with Digi ConnectCore Cloud Services. Create. Configure. Deploy. Manage.

SOM MAPPING	DIGI CONNECTCORE 93	DIGI CONNECTCORE 8X	DIGI CONNECTCORE 8M MINI	DIGI CONNECTCORE 8M NANO
PERIPHERAL ON SMARC ADAPTER				
MIPI DISPLAY 1	✓	✓	✓	✓
MIPI DISPLAY 2		✓		
MIPI CSI 1	✓	✓	✓	✓
RGMII ETHERNET	✓	✓	✓	✓
USB1 OTG 2.0	✓	✓	✓	✓
USB2 OTG 2.0	✓	✓	✓	
SPIO	✓	✓	✓	✓
XBEE	✓	✓	✓	✓
GPIO	5	5	5	5
USER LED	2	2	2	2
POWER LED	✓	✓	✓	✓
UHCS1	✓	✓	✓	✓
PCIE		✓	✓	
CONSOLE	✓	✓	✓	✓
UARTS (4-WIRE)	2	2	2	2
FLEXCAN	2	2		

The information provided in this document is preliminary and may be subject to change without notice.



For more information, please visit digi.com.



For more information about Digi SMARC Adapter, visit digi.com/smarc-adapter.

877-912-3444 | 952-912-3444

